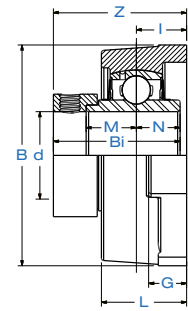
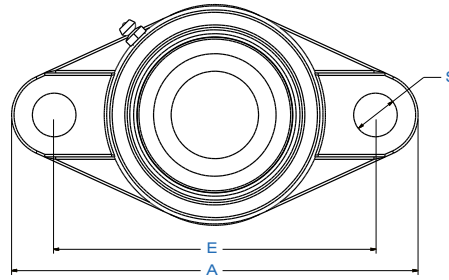


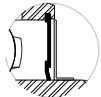


# SNCSFLM 200

Normal-Duty 2-Bolt Flange Block  
Large Bolt Holes  
Eccentric Lock



Seal Styles



Standard Seal with Flinger



Triple-Lip L3 Seal

Bearing Number	Shaft Dia.	Dimensions in. mm.											Bolt Used	Load Rating lbs. kN.		Bearing Insert	Housing Number	Wt. lbs. kg.		
	d in. mm.	A	E	I	G	L	S	B	Z	Bi	N	M		in. mm.	Dynamic Cr				Static Cor	
SNCSFLM 201-8	1/2																	SNC 201-8	SFLM 204	1.5 0.7
SNCSFLM 202-10	5/8	4.45	3.54	0.59	0.47	1.00	0.47	2.36	1.64	1.5472	0.5000	0.6732	3/8	2,331	1,142	SNC 202-10				
SNCSFLM 204-12	3/4	113.0	90.0	15.0	12.0	25.5	12.0	60.0	41.6	39.3	12.7	17.1	M10	10.37	5.08	SNC 204-12				
SNCSFLM 204	20																SNC 204			
SNCSFLM 205-14	7/8																	SNC 205-14	SFLM 205	2.0 0.9
SNCSFLM 205-15	15/16	5.12	3.90	0.63	0.55	1.06	0.63	2.68	1.69	1.6220	0.5630	0.6850	1/2	2,542	1,349	SNC 205-15				
SNCSFLM 205	25	130.0	99.0	16.0	14.0	27.0	16.0	68.0	42.9	41.2	14.3	17.4	M14	11.31	6.00	SNC 205				
SNCSFLM 205-16	1																SNC 205-16			
SNCSFLM 206-17	1 1/16																	SNC 206-17	SFLM 206	2.4 1.1
SNCSFLM 206-18	1 1/8	5.83	4.61	0.71	0.51	1.22	0.63	3.15	1.89	1.8110	0.6260	0.7165	1/2	3,554	1,942	SNC 206-18				
SNCSFLM 206	30	148.0	117.0	18.0	13.0	31.0	16.0	80.0	48.1	46.0	15.9	18.2	M14	15.81	8.64	SNC 206				
SNCSFLM 206-19	1 3/16																SNC 206-19			
SNCSFLM 206-20	1 1/4																SNC 206-20			
SNCSFLM 207-20	1 1/4																	SNC 207-20	SFLM 207	3.1 1.4
SNCSFLM 207-21	1 15/16	6.34	5.12	0.75	0.59	1.34	0.63	3.54	2.02	1.9606	0.6890	0.7402	1/2	4,683	2,626	SNC 207-21				
SNCSFLM 207-22	1 3/8	161.0	130.0	19.0	15.0	34.0	16.0	90.0	51.3	49.8	17.5	18.8	M14	20.83	11.68	SNC 207-22				
SNCSFLM 207	35																SNC 207			
SNCSFLM 207-23	1 7/16																SNC 207-23			
SNCSFLM 208-24	1 1/2	6.89	5.67	0.83	0.61	1.42	0.63	3.94	2.20	2.1220	0.7480	0.8425	1/2	5,294	3,057	SNC 208-24	SFLM 208	4.0 1.8		
SNCSFLM 208-25	1 9/16	175.0	144.0	21.0	15.5	36.0	16.0	100.0	55.9	53.9	19.0	21.4	M14	23.55	13.60	SNC 208-25				
SNCSFLM 208	40																		SNC 208	
SNCSFLM 209-26	1 5/8																	SNC 209-26	SFLM 209	4.4 2.0
SNCSFLM 209-27	1 11/16	7.32	5.83	0.87	0.63	1.50	0.75	4.19	2.24	2.1220	0.7480	0.8425	5/8	5,923	3,507	SNC 209-27				
SNCSFLM 209-28	1 3/4	186.0	148.0	22.0	16.0	38.0	19.0	106.5	56.9	53.9	19.0	21.4	M16	26.35	15.60	SNC 209-28				
SNCSFLM 209	45																SNC 209			
SNCSFLM 210-30	1 7/8																	SNC 210-30	SFLM 210	5.7 2.6
SNCSFLM 210-31	1 15/16	7.68	6.18	0.87	0.67	1.57	0.75	4.45	2.37	2.2480	0.7480	0.9685	5/8	6,402	4,046	SNC 210-31				
SNCSFLM 210	50	195.0	157.0	22.0	17.0	40.0	19.0	113.0	60.1	57.1	19.0	24.6	M16	28.48	18.00	SNC 210				
SNCSFLM 210-32	2																SNC 210-32			
SNCSFLM 211-32	2																	SNC 211-32	SFLM 211	7.0 3.2
SNCSFLM 211-34	2 1/8	8.78	7.24	0.98	0.79	1.69	0.75	5.12	2.70	2.5906	0.8740	1.0906	5/8	7,931	5,036	SNC 211-34				
SNCSFLM 211	55	223.0	184.0	25.0	20.0	43.0	19.0	130.0	68.6	65.8	22.2	27.7	M16	35.28	22.40	SNC 211				
SNCSFLM 211-35	2 3/16																SNC 211-35			
SNCSFLM 212-36	2 1/4																	SNC 212-36	SFLM 212	10.6 4.8
SNCSFLM 212	60	9.80	7.95	1.14	0.81	1.89	0.91	5.59	2.98	2.8425	1.0000	1.2165	3/4	9,554	5,921	SNC 212				
SNCSFLM 212-38	2 3/8	249.0	202.0	29.0	20.5	48.0	23.0	142.0	75.8	72.2	25.4	30.9	M20	42.50	26.34	SNC 212-38				
SNCSFLM 212-39	2 7/16																SNC 212-39			

**MARINER**®